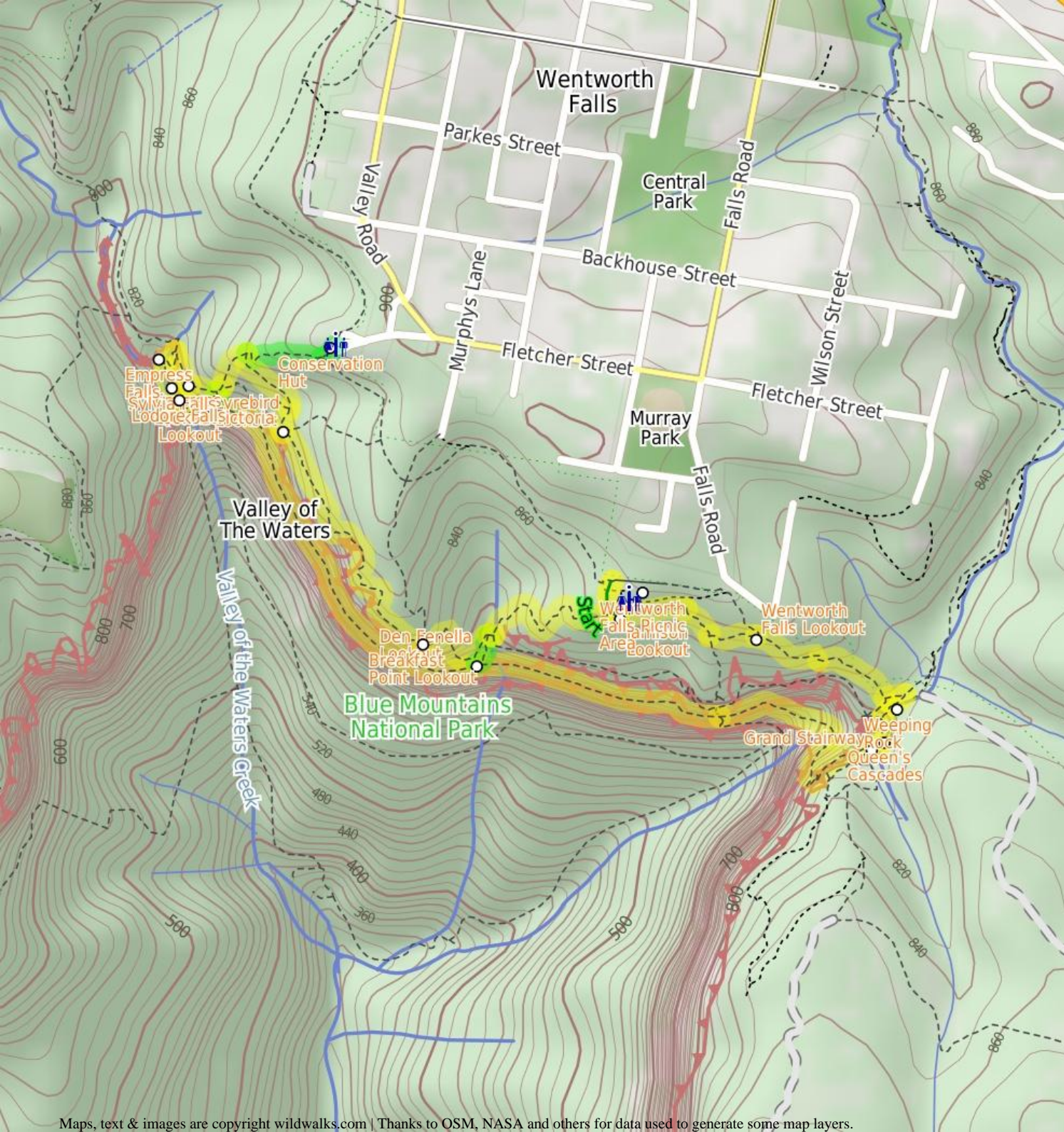




National Pass, Overcliff and Den Fenella Circuit



4 hrs

Hard track

5 km Circuit

895m



This grand tour of the Wentworth Falls area explores many waterfalls, lookouts and cliff edges. The walk has a lot of steps and runs beside fenced cliff edges, so walkers will need to be fit and comfortable with heights. The walk explores the historic National Pass, Wentworth falls, the Valley of the Waters and many other highlights. There is an optional side trip to the Conservation Hut for lunch, before returning to the start via the Overcliff walk and Den Fennella. A great way to explore the majestic views.

665m

867m

Blue Mountains National Park

Wentworth Falls Picnic Area

The Wentworth Falls Picnic Area is in the Blue Mountains National Park on Sir H Burrell Drive (Wentworth Falls). The picnic area is host to a couple of wonderful lookouts and some good facilities. A large car park, toilets (wheelchair accessible), picnic tables, free electric BBQs, town water and information signs. This is a great spot to relax between walks in the area.

Jamison Lookout

The recently renovated Jamison Lookout is on Sir H Burrell Drive, in the Blue Mountains National Park. The lookout has a wonderful view to the south, down the Jamison Valley to Mount Solitary and beyond. This is a great wheelchair-accessible viewpoint with a large information sign and bench seats. The lookout is fenced, and is located just below the Wentworth Falls Picnic Area.

Wentworth Falls Lookout

Wentworth Falls Lookout, in the Blue Mountains National Park, is beside Sir H Burrell Drive. The lookout is fenced and has a large information sign about the area. There are some bench seats and great vistas. There is a view to Wentworth Falls (in the valley to the left), but the most captivating view is across the Jamison Valley to Mount Solitary. There are also great views of the Kings Tableland (left), Sublime Point (right) and Narrow Neck (far right) escarpments. This is a great place to enjoy the scope of this World Heritage listed area.

Weeping Rock

Weeping Rock is a waterfall on Jamison Creek, upstream of Wentworth Falls in the Blue Mountains National Park. The water falls over the wide circular top overhang, to then cascade down the rocks to a pool below. A staircase beside the falls helps walkers view this waterfall from different angles. This is a nice cool spot on hot days. The rocks are slippery and there are no fences, care is needed.

Queen's Cascades

Queen's Cascades are a lovely set of falls on the Jamison Creek at the top of Wentworth Falls. The creek heads down the wide, two-stage cascades into a sandy pool. From the pool, the water flows between the stepping stones, under the fence and down the very tall Wentworth Falls. There are also great views to Sublime Point across the valley.

Before You walk

Bushwalking is fun and a wonderful way to enjoy our natural places. Sometimes things go bad, with a bit of planning you can increase your chance of having an enjoyable and safer walk. Before setting off on your walk check

- 1) Weather Forecast ([BOM Central Tablelands District](#))
- 2) Fire Dangers ([Greater Sydney Region](#))
- 3) Park Alerts ([Blue Mountains National Park](#))
- 4) Research the walk to check your party has the skills, fitness and equipment required
- 5) Agree to stay as a group and not leave anyone to walk solo

Think before you TREK

The 'Think before you TREK' program developed by NSW Police & NPWS promotes the benefits of planning ahead for your bushwalking trip by using an easy to remember acronym:

- T** Take adequate supplies of food, water, navigation and first aid equipment.
- R** Register your planned route and tell friends and family when you expect to return.
- E** Emergency beacon (PLB's) should be carried on walks with significant gaps in mobile coverage (check terrain profile).
- K** Keep to your planned route and follow the map and walking trails.

Topo Maps

The maps provided on wildwalks are helpful, but there are times where you may need maps covering a broader area. Maps that cover this walk include;

1:25 000 Map Series:89301S KATOOMBA

1:100 000 Map Series:8930 KATOOMBA

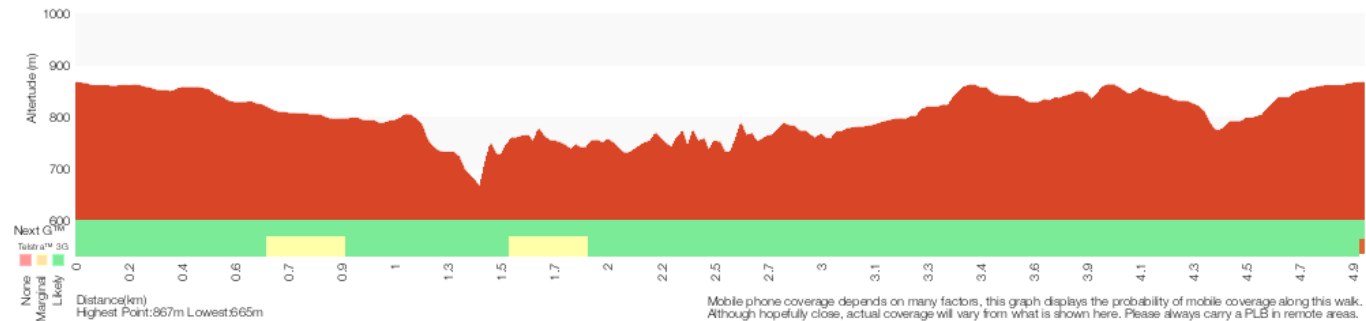
Grade

This walk has been graded using the AS 2156.1-2001. The overall grade of the walk is determined by the highest classification along the whole track.



Grade 4/6
Hard track

Length	5 km Circuit
Time	4 hrs
Quality of track	Formed track, with some branches and other obstacles (3/6)
Signs	Directional signs along the way (3/6)
Experience Required	Some bushwalking experience recommended (3/6)
Weather	Storms may impact on navigation and safety (3/6)
Infrastructure	Limited facilities, not all cliffs are fenced (3/6)



Mobile phone coverage depends on many factors, this graph displays the probability of mobile coverage along this walk. Although hopefully close, actual coverage will vary from what is shown here. Please always carry a PLB in remote areas.

Are you ready to have fun?

Please ensure you and your group are well prepared and equipped for all possible hazards and delays. Check park closures, weather information and Fire Danger Rating before setting out. Optional side trips and alternate routes noted are not included in this walks overall grade, length or time estimate. Please allow extra time for resting and exploring areas of interest. The authors, staff and owners of wildwalks take care in preparing this information but will not accept responsibility for any inconvenience, loss or injury you may experience. Please take care, have fun - Happy Walking.

Getting there You can get to Sir H. Burrell Drive Car Park (Nth) (gps: -33.7249, 150.3689) by car or bus. Car: There is free parking available.

This is a circuit, so you will finish back at the start.

Find up to date and more information including; travel directions, weather, park closures and walker feedback at <http://wild.tl/npoadfc>

0 | Wentworth Falls Picnic Area

The Wentworth Falls Picnic Area is in the Blue Mountains National Park on Sir H Burrell Drive (Wentworth Falls). The picnic area is host to a couple of wonderful lookouts and some good facilities. A large car park, toilets (wheelchair accessible), picnic tables, free electric BBQs, town water and information signs. This is a great spot to relax between walks in the area.

0 | Sir H. Burrell Drive Car Park (Nth)

(90 m 2 mins) From the 'Short Cut Track' sign, this walk heads to the far end of the car park. The walk then heads left along the footpath to come to the fenced and signposted Jamison Lookout.

0.09 | Jamison Lookout

The recently renovated Jamison Lookout is on Sir H Burrell Drive, in the Blue Mountains National Park. The lookout has a wonderful view to the south, down the Jamison Valley to Mount Solitary and beyond. This is a great wheelchair-accessible viewpoint with a large information sign and bench seats. The lookout is fenced, and is located just below the Wentworth Falls Picnic Area.

0.09 | Jamison Lookout

(140 m 2 mins) Continue straight: From Jamison Lookout, this walk follows the footpath along Sir H. Burrell Drive, past the information sign, keeping the Jamison Valley to the right. Soon the footpath leads to an intersection at the top of some steps (signposted as the way to 'Princes Rock Lookout').

0.22 | Int of Sir H. Burrell Drive and Princes Rock Track

(180 m 5 mins) Turn right: From the top of the steps, this walk heads down the steps following the 'Princes Rock Lookout' sign. The track soon comes to a three-way intersection, with a 'Car Park' arrow pointing back up.

Turn left : From the intersection, this walk follows the 'Wentworth Falls Lookout' arrow up the steps as the track bends right. The track soon passes an old water trough on the left (not suitable for drinking). Soon after this, the track comes to Wentworth Falls Lookout (next to Sir H. Burrell Drive).

0.41 | Wentworth Falls Lookout

Wentworth Falls Lookout, in the Blue Mountains National Park, is beside Sir H Burrell Drive. The lookout is fenced and has a large information sign about the area. There are some bench seats and great vistas. There is a view to Wentworth Falls (in the valley to the left), but the most captivating view is across the Jamison Valley to Mount Solitary. There are also great views of the Kings Tableland (left), Sublime Point (right) and Narrow Neck (far right) escarpments. This is a great place to enjoy the scope of this World Heritage listed area.

0.41 | Wentworth Falls Lookout

(330 m 8 mins) Veer right: From Wentworth Falls Lookout, this walk follows the 'Wentworth Falls Track' - 'To The Falls' sign down the hill (with the view to the right). The walk heads down the log steps, passing several information signs. The track soon heads through a sharp right-hand bend, then comes to an intersection (with a track closed at the time of writing) at the sharp left bend. There is a sign here, pointing back up to 'Wentworth Falls picnic area'.

Turn left: From the intersection, this walk heads downhill following the 'Wentworth Falls - National Pass' sign. The walk gradually descends the well-maintained log stairs, passing some views of the valley on the right. Soon the track comes to an intersection with another sign, pointing back up to 'Wentworth Falls Picnic Area'.

0.74 | Int of Wentworth Falls and Weeping Rock Tracks (Nt)

(80 m 2 mins) Veer left: From the intersection, this walk follows the 'Weeping Rock Circuit' sign down the steps, (with the valley to the right). Soon, the track comes to an intersection with 'Darwins Track' (on the left).

Turn right: From the intersection, this walk heads down the steps following the 'Weeping Rock Circuit' sign to the creek a short distance away. Soon the track comes beside Jamison Creek, a lovely flat section of the creek on top of the waterfall. The track continues downstream and across a slippery rockshelf and down a staircase beside the falls. At the bottom of the stairs is another slippery rock platform and a pool at the bottom of Weeping Rock waterfall.

0.81 | Weeping Rock

Weeping Rock is a waterfall on Jamison Creek, upstream of Wentworth Falls in the Blue Mountains National Park. The water falls over the wide circular top overhang, to then cascade down the rocks to a pool below. A staircase beside the falls helps walkers view this waterfall from different angles. This is a nice cool spot on hot days. The rocks are slippery and there are no fences, care is needed.

0.81 | Weeping Rock waterfall

(40 m 1 mins) Continue straight: From the bottom of Weeping Rock waterfall, this walk heads downstream (keeping the creek to the left), up some steps and passes another great view of Weeping Rock. After passing between some large rocks, the walk comes to a 3-way intersection, with a sign pointing back to 'Weeping Rock Circuit' and 'Darwins Walk'.

0.85 | Int of Weeping Rock and Wentworth Falls Tracks

(60 m 1 mins) Turn left: From the intersection, this walk follows the 'Wentworth Falls' and 'Wentworth Pass' signs down the steps. The track soon comes to a nice view of Jamison Creek, where it continues to wind down the hill and open up at a fenced rock platform at the top of Wentworth Falls. Here the walk crosses Jamison Creek using the stepping stones, to reveal a lovely waterhole and Queen's Cascades (the creek may be impassable after rain). This is the top of the Wentworth Falls.

0.91 | Queen's Cascades

Queen's Cascades are a lovely set of falls on the Jamison Creek at the top of Wentworth Falls. The creek heads down the wide, two-stage cascades into a sandy pool. From the pool, the water flows between the stepping stones, under the fence and down the very tall Wentworth Falls. There are also great views to Sublime Point across the valley.

0.91 | Top of Wentworth Falls

(30 m 1 mins) Continue straight: From the top of Wentworth Falls, this walk heads away from the falls (keeping the valley view to the right). With the handrail on the right, the track soon crosses a small creek and comes to a three-way intersection and a 'Rocket Point Circuit' sign.

0.94 | Grand Stairway

The Grand Stairway is a very memorable section of the National Pass in the Blue Mountains National Park. The stairway is reported to be 'the tallest outdoor staircase in Australia' and was built in the early 1900's by hand (and dynamite). This stairway, and the rest of the National Pass, was built by a team nicknamed 'the Irish Brigade' for the cost of A£430 . Today, the Grand Stairway is well-maintained and provides walkers access to the valley below Wentworth Falls.

0.94 | Rocket Point Creek Intersection

(330 m 16 mins) Continue straight: From the intersection, this walk follows the 'National Pass To Wentworth Pass' sign along the clear track, keeping the handrail on the right. The track soon comes to the cliff. From here the National Pass heads through a series of sandstone caves and down plenty of stairs, most of which are cut into the stone. The views into the valley and of Wentworth Falls are stunning. After passing a fairly long rock-shelf at the bottom of the timber stairs (and the square hole in the cliff), this walk heads down a long set of steep stone stairs to come to a fenced 'No Access Cliff Point' area. From here, the pass continues down more steep stone stairs until reaching the moister area at the bottom of the cliff. The track continues down the hill along the steps and stepping stones. As the track approaches the creek, it zigzags down to the stone-slab bridges and crosses Jamison Creek. From here, there is a small side track up to the pool, at the bottom of the falls (halfway down the main Wentworth Falls).

1.27 | Middle Wentworth Falls

(270 m 19 mins) Continue straight: From pool and creek crossing (halfway up Wentworth Falls), this walk follows the track (keeping the main valley to the left) away from the falls. The track heads across the rock-platform and timber bridge, with the handrail on the left, then up a series of steep stairs. As the track flattens out, it winds around the side of the valley at the base of a large cliff (on the right). Following the stepping stones, the track heads under a low sandstone overhang (be sure to duck) - past this overhang, there are great views back to the waterfall. The track then rounds the corner to the right, coming to an intersection marked with a 'National Pass' sign and a sign pointing back to 'Wentworth Falls' (at the top of 'Slack Stairs').

1.53 | Top of the Slack Stairs

(1.5 km 1 hr 23 mins) Continue straight: From the intersection at the top of 'Slack Stairs', this walk follows the 'National Pass - Valley of the Waters' sign up the few steps, keeping the main valley to the left. The walk soon crosses a creek (and waterfall) using the stepping stones. The walk continues along the cliff-line, up the stairs and along more stepping stones to pass over a couple of smaller creeks. Soon after passing a great vantage point, the walk comes to a handrailed timber platform that passes behind a waterfall from Den Fenella Creek. From the Den Fenella Creek waterfall, this walk heads along the path, keeping the valley views to the left. After passing a few open ledges with great valley views, the walk heads into another valley and crosses a small creek. The walk continues along the cliff line as it bends right, into the Valley of the Waters, passing a sandstone bench seat and few small creeks. The walk then crosses a timber platform through a sandstone overhang then heads down the stairs to a lovely ferntree valley. From here, the walk continues down the stairs, soon coming to an intersection with Wentworth Pass and a 'National Pass - Wentworth Falls' sign pointing back.

2.98 | Int of Valley of the Waters and National Pass Trac

(20 m 1 mins) Veer right: From the intersection, this walk follows the 'National Pass - Conservation Hut' sign up the steps, keeping the creek to the left. After heading under the overhang and up the timber steps, the walk crosses the Valley Of the Waters Creek in front of Lodore Falls (using the stepping stones). This creek may be impassable after rain.

3.01 | Lodore Falls

Lodore Falls are a lovely set of falls on the Valley of the Waters Creek. The narrow falls have a staircase on one side and stepping stones (and handrail) crossing the bottom, making it easier for walkers to appreciate this waterfall from many angles. Just beyond the handrail, the water falls over another cliff, providing a great view down the valley.

3.01 | Sylvia Falls

Sylvia Falls on the Valley of the Waters Creek is a lovely tall cascade. The falls are in a deep sandstone canyon with mossy walls. The stairs and handrail pass closely to these falls, helping walkers get nice and close. From near the top of the falls, there is a great view down the valley looking between the canyon walls.

3.01 | Lodore Falls

(70 m 2 mins) Continue straight: From Lodore Falls, this walk heads upstream, up the staircase, keeping the creek on the right. The steps climb to the base of a wider cascade - Sylvia Falls. From Sylvia Falls, this walk heads up the stairs, keeping the handrail and creek to the right. The path heads up the hill, passing a 'Track' sign before coming to a creek crossing in front of the tall Empress Falls.

3.08 | Empress Falls

Empress Falls is a spectacular waterfall in the Valley of the Waters. The Valley of the Water Creek comes out of the slot in the cliff and tumbles down a series of cliffs to a sandy pool. The fall is the site of the last abseil in a popular canyon, making a great site for walkers in the area. Stepping stones help walkers cross below the falls. There is a small overhang next to the falls, giving the area shade and offering a great place to rest.

3.08 | Empress Falls Crossing

(180 m 6 mins) Continue straight: From the bottom of Empress Falls, this walk crosses the creek using the stepping stones, keeping the handrail on the left. On the way up the hill, the walk passes closer to Empress Falls before zigzagging up to a sandstone overhang and timber staircase. At the top of the staircase, the walk crosses Isabel Creek using the stepping stones. The track then winds up the hill, soon coming to an intersection with the 'Nature Track' and a sign pointing back to 'National Pass - Valley of the Waters'. (These creeks may not be passable after rain)

Turn right: From the intersection, this walk heads up the wooden steps, following the 'National Pass - Tea Rooms' sign. The walk soon heads through a long rock overhang to the base of a metal staircase. The walk climbs the series of steep metal staircases zigzagging up the hill. After climbing some wooden steps, the walk comes to the fenced and signposted 'Empress Lookout'.

3.26 | Empress Lookout

Empress Lookout is a fenced and signposted lookout, perched on a sandstone overhang above the Valley of the Waters Creek. There is a view down to part of the Empress Falls and into the canyon. The views are filtered through the surrounding trees. It makes for a good spot to catch your breath when walking into, or out of, the Valley of the Waters.

3.26 | Empress Lookout

(60 m 2 mins) Turn left: From the Empress Lookout, this walk heads up the wooden steps away from the lookout. The walk heads up the hill, soon passing under a sandstone overhang then up more steps, coming to a 'Y' intersection with the signposted 'Queen Victoria Lookout' track (on the right).

3.32 | Optional sidetrip to Queen Victoria Lookout

(20 m 1 mins) Turn right: From the intersection, this walk follows the 'Queen

Victoria Lookout' sign down the steps towards the handrail. Soon the track passes a small lookout on the left and, shortly afterwards, the fence leads to the rock platform and fenced 'Queen Victoria Lookout'. At the end of this side trip, retrace your steps back to the main walk then Turn right.

3.32 | Queen Victoria Lookout

The Queen Victoria Lookout is perched above the Valley of the Waters, south-west of Conservation Hut. The fenced lookout has views into the narrow section of the valley. The views are made more dramatic by the roar of the waterfalls below and the mists which frequent the area. Empress Falls are only just visible - the main views extend down Jamison Valley. Kings Tableland (left) and Sublime Point(right) dominate the views and the eastern edge of Mount Solitary and beyond is also visible.

3.32 | Int of Valley of the Waters and Queen Victoria Tra

(20 m) Veer left: From the intersection, this walk heads away from 'Queen Victoria Lookout' up the set of stairs to almost immediately come to a 'Y' intersection with the unsignposted Lyrebird Cliff track (on the right).

3.33 | Int of Lyrebird Cliff Track and Valley of the Water

(90 m 3 mins) Continue straight: From the intersection, this walk heads up the timber and dirt steps, away from the valley views. The track passes a few faint tracks (on the right, that lead to an unfenced view point). The track soon comes to a signposted intersection with the 'Overcliff Track'.

3.43 | Optional sidetrip to Conservation Hut

(210 m 5 mins) Continue straight: From the intersection, this walk follows the 'National Pass - Tea Rooms' sign up the steps, with the handrail on the left. After a short time, the track passes a couple of faint tracks (on the right, leading to an old picnic area). Heading up the main steps, the walk passes another handrail (and signs) then an information sign, before coming to a three-way intersection with the 'Shortcut Track'.

Continue straight: From the intersection, this walk heads up the steps towards the building. The walk passes a couple of picnic shelters (on the right) before coming to the road and the front of the 'Conservation Hut'. At the end of this side trip, retrace your steps back to the main walk then Turn left.

3.43 | Conservation Hut

Conservation Hut is a small cafe perched above the Valley of the Waters, Blue Mountains National Park. The hut was opened in 1963 as a meeting place for the local conservation movement. Rebuilt, Conservation Hut opened as a cafe in 1993, serving breakfast, lunch and dinner, seven days a week. Around the Conservation Hut is a small parking area, public toilets, picnic shelters, town water and B&B's. For further information or bookings call (02) 4757 3827. [More info.](#)

3.43 | Int of Valley of the Waters and Overcliff Tracks

(220 m 6 mins) Turn sharp right: From the intersection, this walk heads southeast along the flat, but occasionally rough, track. This goes down slightly, coming to an unmarked intersection with another bush track.

Continue straight: From the intersection, this walk heads east gently downhill, keeping the valley view to the right. After crossing a section of track that is often muddy, the walk comes to a handrail that leads to the signposted 'Lyrebird Lookout'.

3.64 | Lyrebird Lookout

Lyrebird Lookout is a fenced and signposted lookout on the Overcliff Walk, south of the Conservation Hut in the Blue Mountains National Park. The lookout hosts a great view of Sublime Point (right) and Mount Solitary (centre). A welcome gap in the trees reveals this great view.

3.64 | Lyrebird Lookout

(640 m 21 mins) Continue straight: From Lyrebird Lookout, this walk heads up the hill away from the lookout and follows the right-hand track. Soon the track passes a section that is often muddy and then moves into the thicker bushland. The track soon passes an informal track (on the right) then heads down a set of steps with a handrail. The walk follows a large rock wall (on the left) for a short time before passing another informal track (on the right). Soon the track comes to a three-way intersection at the unsignposted Breakfast Point Lookout.

4.28 | Breakfast Point Lookout

Breakfast Point Lookout is on the Overcliff Walk, west of Den Fenella Creek. The lookout has a short stone wall and great views across the Jamison Valley. The center piece of the view is out to Mount Solitary and beyond, there are also good views to Kings Tableland (left). This is a good spot to stop and enjoy the sweeping views of the majestic valley.

4.28 | Breakfast Point Lookout

(230 m 12 mins) Continue straight: From Breakfast Point Lookout, this walk follows the old 'Undercliff walk' sign east, keeping the main valley view to the right. The track meanders for a little while before heading down some steps (around some large boulders) before coming to an intersection where the walk turns left. (The right-hand track heads down to the Lady Sees lookout with a fence in disrepair, currently closed). About 100m later, the clear track leads down to a signposted intersection with the 'Den Fenella' track just before the footbridge.

4.51 | Optional sidetrip to Den Fenella Lookout

(70 m 4 mins) Turn right: From the intersection, this walk follows the 'Den Fenella' sign along the lower track, keeping the creek to the left. The track soon begins to go down very steeply (can be slippery) between the handrails and rock wall. The track then crosses the creek at the stepping stones below the cascades (the creek may be impassable after rain). On the other side of the creek, the walk heads down the steps to come to a bridge below the bigger Den Fenella Fall. From the Den Fenella Fall, this walk crosses the metal bridge and continues along the cliff edge along the fence-lined track. After heading down some steps, the track ends at a fenced point with great views across the valley. At the end of this side trip, retrace your steps back to the main walk then Veer right.

4.51 | Den Fenella Lookout

The Den Fenella Lookout is a small fenced lookout on a cliff ledge, near where Den Fenella Creek falls into the Jamison Valley. The lookout is at the end of the track and has a tall cliff above and below. There is a small tree on the ledge adding to the sense of depth. From here, there are great views to Mount Solitary (middle), Kings Tableland (left), Narrow Neck Plateau (far right) and Sublime Point (right). This is a great spot, well worth a visit.

4.51 | Int of Overcliff and Denfenella Lookout Track

(10 m) Veer left: From the intersection, this walk crosses over Den Fenella Creek using the bridge and comes to an intersection with the 'Undercliff Walk'.

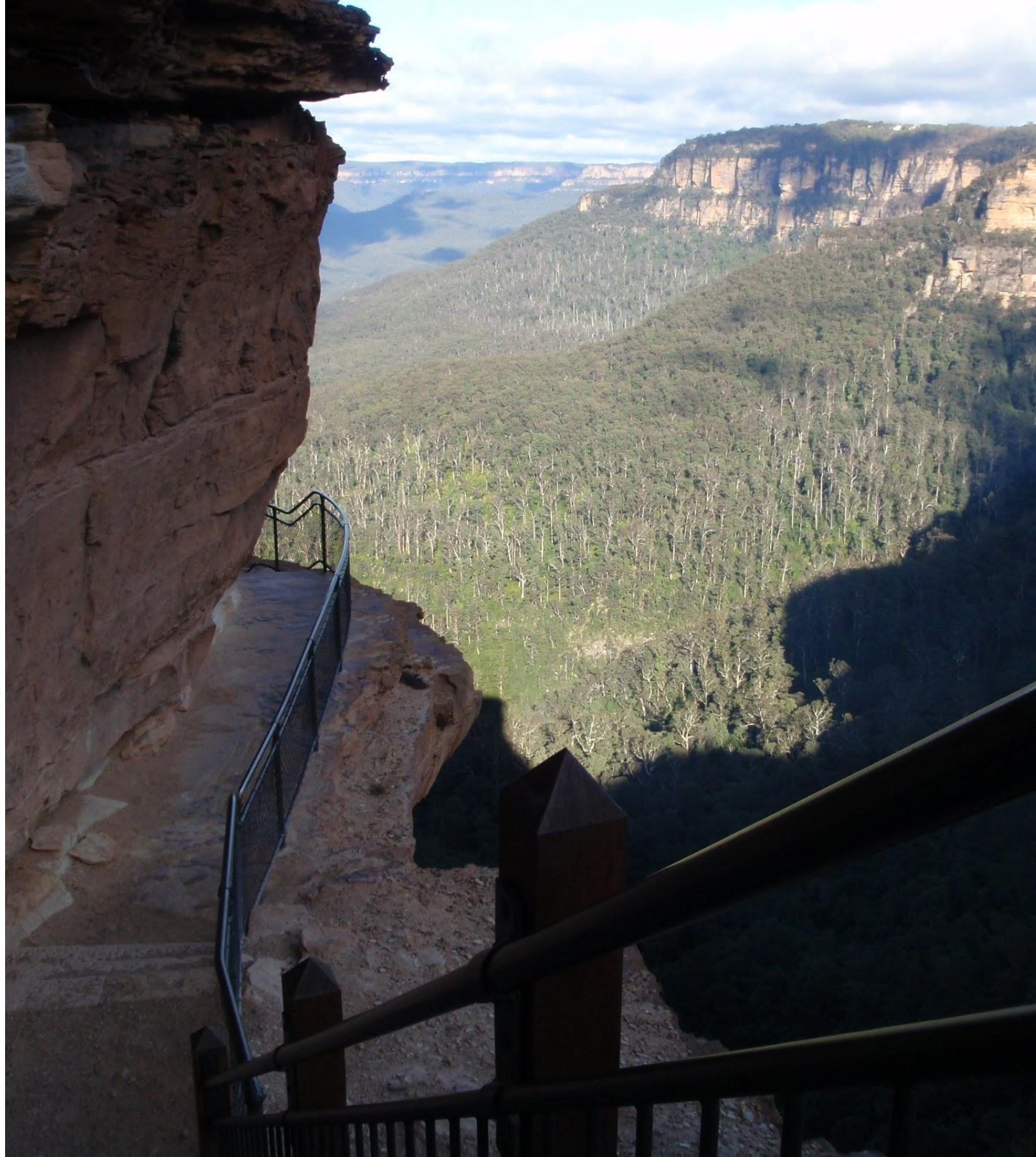
4.52 | Int of Den Fenella and Undercliff Tracks

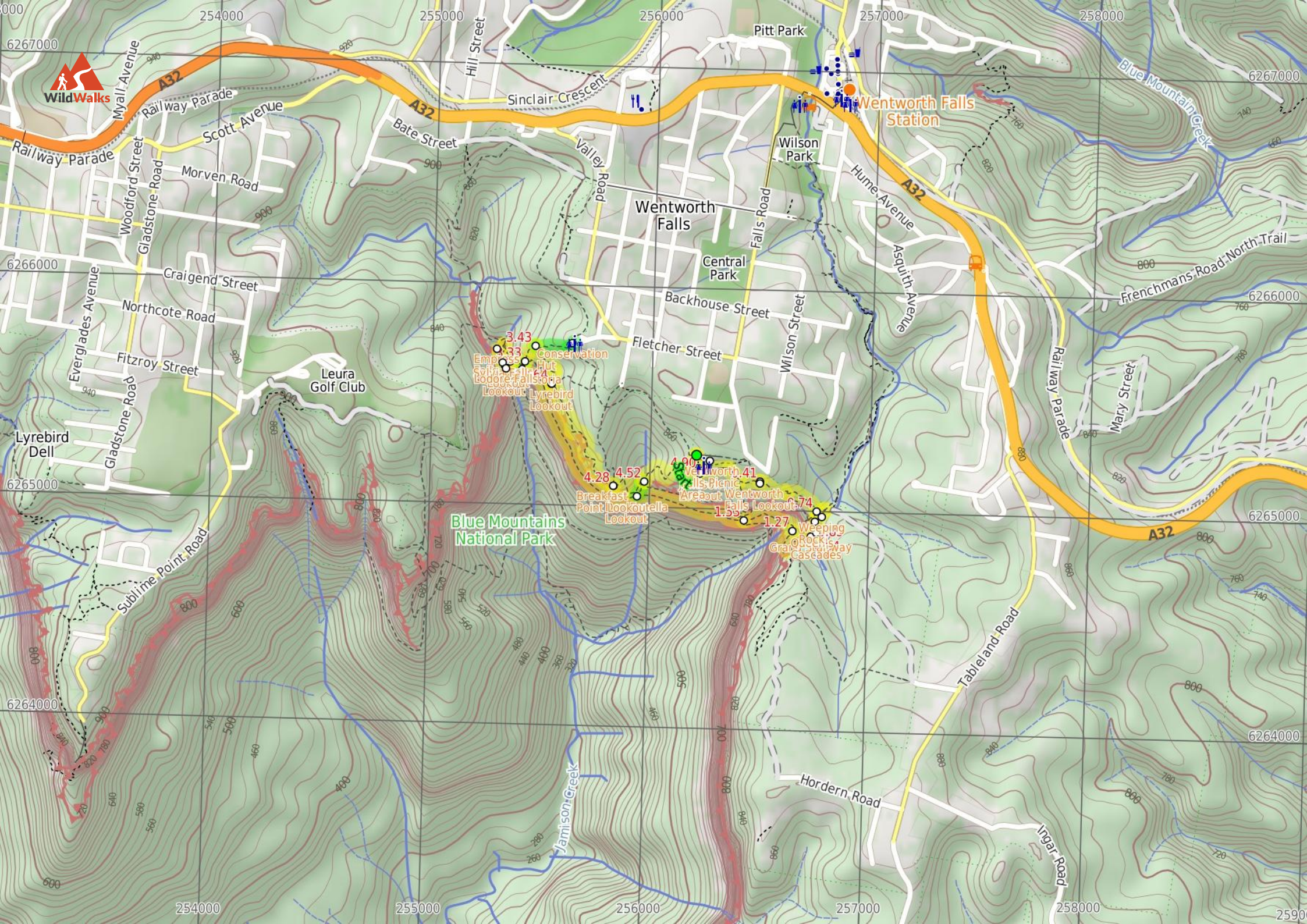
(380 m 9 mins) Turn left: From the intersection, this walk follows the 'Wentworth Falls Picnic Area' upstream, keeping Den Fenella Creek on the left. Soon, the track turns right and then starts to zigzag up the hill. About halfway up the hill, near the cliffs, the track passes a lookout, with distant views filtered by surrounding trees (avoid the track to the right). At the top of the hill, the track passes between two old tin-roof shelters, through a small picnic area and turns right onto the footpath. The footpath then follows the

'To walking tracks' sign, soon coming to the fenced and signposted 'Jamison Lookout'.

4.9 | Jamison Lookout

(90 m 2 mins) Turn around: From Jamison Lookout, this walk heads through the large car park to the far side of the lower parking area, coming to the signposted 'Short Cut Track' trackhead.





Blue Mountains National Park

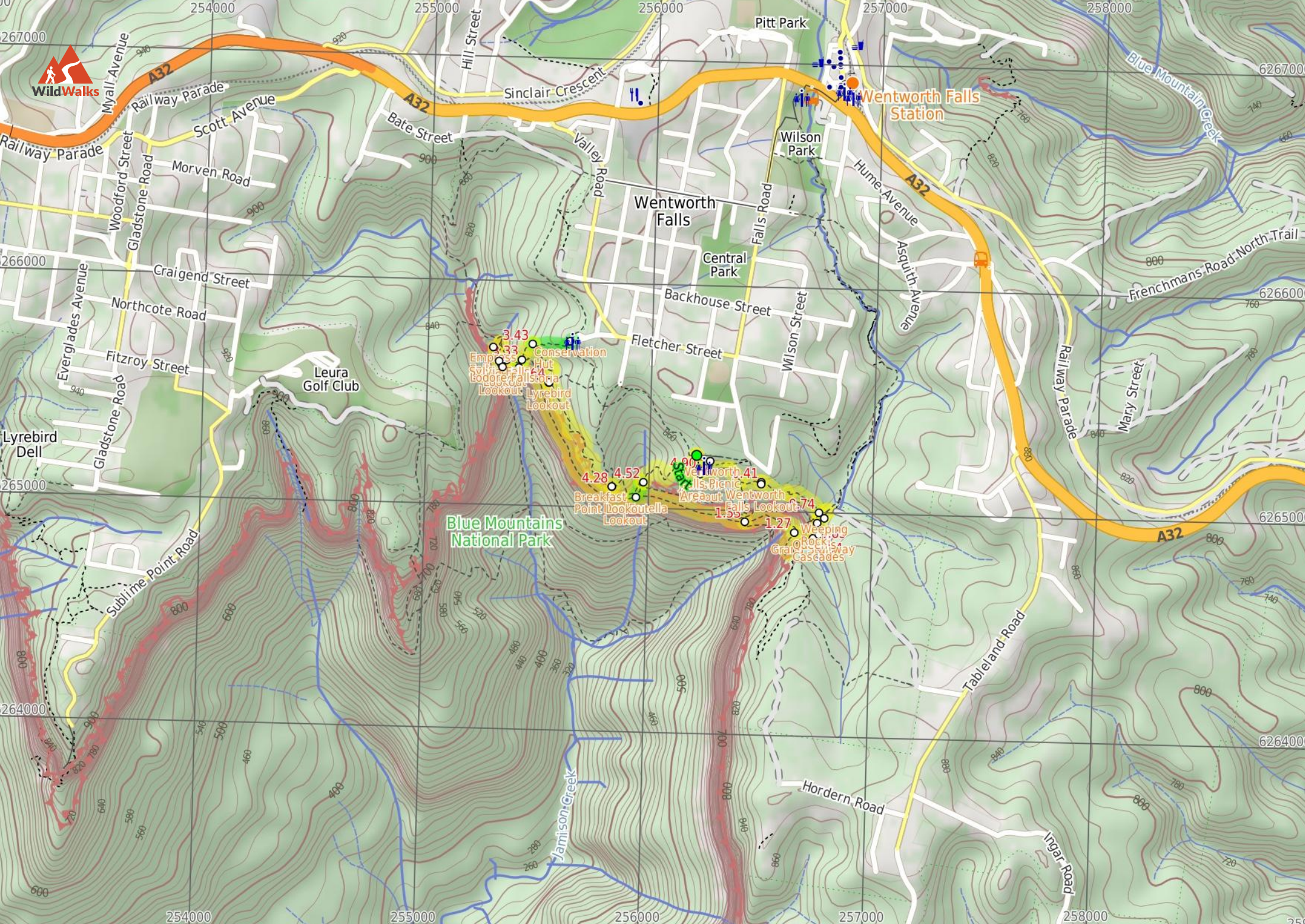
Wentworth Falls Station

3.43
Empire Lookout
Lyrebird Lookout
Conservation Hut
Wentworth Falls Picnic Area

4.28
Breakfast Point Lookout
4.52
Wentworth Falls Lookout
4.90
Wentworth Falls Picnic Area

1.27
Weeping Rock Cascades
1.55
Wentworth Falls Picnic Area

WildWalks



Summary navigation sheet for the National Pass, Overcliff and Den Fenella Circuit



km	From	Up/Dwn	Length	Initial directions (Use full tracknotes and maps for more detail)
Start	Sir H. Burrell Drive Car Park (Nth) -33.7249,150.3689 (GR Katoomba, 562652)	0 -6	90 m 2 mins	From the 'Short Cut Track' sign, this walk heads to the far end of the car park.
0.09	Jamison Lookout -33.7255,150.369 (GR Katoomba, 562652)	3 -1	140 m 2 mins	Continue straight: From Jamison Lookout, this walk follows the footpath along Sir H.
0.22	Int of Sir H. Burrell Drive and Princes Rock Track -33.7254,150.3705 (GR Katoomba, 564652)	13 -17	180 m 5 mins	Turn right: From the top of the steps, this walk heads down the steps following the 'Princes Rock Lookout' sign.
0.41	Wentworth Falls Lookout -33.7259,150.372 (GR Katoomba, 565651)	4 -52	330 m 8 mins	Veer right: From Wentworth Falls Lookout, this walk follows the 'Wentworth Falls Track' - 'To The Falls' sign down the hill (with the view to the right).
0.74	Int of Wentworth Falls and Weeping Rock Tracks (Nth) -33.7272,150.3748 (GR Katoomba, 568650)	1 -4	80 m 2 mins	Veer left: From the intersection, this walk follows the 'Weeping Rock Circuit' sign down the steps, (with the valley to the right).
0.81	Weeping Rock waterfall -33.7273,150.375 (GR Katoomba, 568650)	0 -8	40 m 1 mins	Continue straight: From the bottom of Weeping Rock waterfall, this walk heads downstream (keeping the creek to the left), up some steps and passes another great view of Weeping Rock.
0.85	Int of Weeping Rock and Wentworth Falls Tracks -33.7276,150.3747 (GR Katoomba, 568650)	3 -2	60 m 1 mins	Turn left: From the intersection, this walk follows the 'Wentworth Falls' and 'Wentworth Pass' signs down the steps.
0.91	Top of Wentworth Falls -33.728,150.3747 (GR Katoomba, 568649)	2 -6	30 m 1 mins	Continue straight: From the top of Wentworth Falls, this walk heads away from the falls (keeping the valley view to the right).
0.94	Rocket Point Creek Intersection -33.7282,150.3745 (GR Katoomba, 567649)	36 -98	330 m 16 mins	Continue straight: From the intersection, this walk follows the 'National Pass To Wentworth Pass' sign along the clear track, keeping the handrail on the right.
1.27	Middle Wentworth Falls -33.728,150.3736 (GR Katoomba, 567649)	117 -88	270 m 19 mins	Continue straight: From pool and creek crossing (halfway up Wentworth Falls), this walk follows the track (keeping the main valley to the left) away from the falls.
1.53	Top of the Slack Stairs -33.7275,150.3712 (GR Katoomba, 564650)	410 -411	1.5 km 1 hr 23 mins	Continue straight: From the intersection at the top of 'Slack Stairs', this walk follows the 'National Pass - Valley of the Waters' sign up the few steps, keeping the main valley to the left.
2.98	Int of Valley of the Waters and National Pass Tracks -33.7214,150.3597 (GR Katoomba, 553656)	14 0	20 m 1 mins	Veer right: From the intersection, this walk follows the 'National Pass - Conservation Hut' sign up the steps, keeping the creek to the left.
3.01	Lodore Falls -33.7212,150.3595 (GR Katoomba, 553656)	9 0	70 m 2 mins	Continue straight: From Lodore Falls, this walk heads upstream, up the staircase, keeping the creek on the right.
3.08	Empress Falls Crossing -33.7206,150.3592 (GR Katoomba, 553657)	34 -16	180 m 6 mins	Continue straight: From the bottom of Empress Falls, this walk crosses the creek using the stepping stones, keeping the handrail on the left.
3.26	Empress Lookout -33.721,150.3598 (GR Katoomba, 554656)	18 0	60 m 2 mins	Turn left: From the Empress Lookout, this walk heads up the wooden steps away from the lookout.
3.32	Int of Valley of the Waters and Queen Victoria Tracks -33.7211,150.3604 (GR Katoomba, 554656)	0 -17	20 m 1 mins	Optional sidetrip to Queen Victoria Lookout. Turn right: From the intersection, this walk follows the 'Queen Victoria Lookout' sign down the steps towards the handrail.
3.32	Int of Valley of the Waters and Queen Victoria Tracks -33.7211,150.3604 (GR Katoomba, 554656)	4 0	20 m	Veer left: From the intersection, this walk heads away from 'Queen Victoria Lookout' up the set of stairs to almost immediately come to a 'Y' intersection with the unsignposted Lyrebird Cliff track (on the right).

Summary navigation sheet for the National Pass, Overcliff and Den Fenella Circuit



km	From	Up/Dwn	Length	Initial directions (Use full tracknotes and maps for more detail)
3.33	Int of Lyrebird Cliff Track and Valley of the Waters Track -33.721,150.3605 (GR Katoomba, 554656)	38 0	90 m 3 mins	Continue straight: From the intersection, this walk heads up the timber and dirt steps, away from the valley views.
3.43	Int of Valley of the Waters and Overcliff Tracks -33.7204,150.361 (GR Katoomba, 555657)	33 -2	210 m 5 mins	Optional sidetrip to Conservation Hut. Continue straight: From the intersection, this walk follows the 'National Pass - Tea Rooms' sign up the steps, with the handrail on the left.
3.43	Int of Valley of the Waters and Overcliff Tracks -33.7204,150.361 (GR Katoomba, 555657)	1 -34	220 m 6 mins	Turn sharp right: From the intersection, this walk heads south-east along the flat, but occasionally rough, track.
3.64	Lyrebird Lookout -33.7219,150.3618 (GR Katoomba, 555655)	78 -75	640 m 21 mins	Continue straight: From Lyrebird Lookout, this walk heads up the hill away from the lookout and follows the right-hand track.
4.28	Breakfast Point Lookout -33.7261,150.3648 (GR Katoomba, 558651)	34 -74	230 m 12 mins	Continue straight: From Breakfast Point Lookout, this walk follows the old 'Undercliff walk' sign east, keeping the main valley view to the right.
4.51	Int of Overcliff and Den Fenella Lookout Track -33.7259,150.3662 (GR Katoomba, 560651)	8 -51	70 m 4 mins	Optional sidetrip to Den Fenella Lookout. Turn right: From the intersection, this walk follows the 'Den Fenella' sign along the lower track, keeping the creek to the left.
4.51	Int of Overcliff and Denfenella Lookout Track -33.7259,150.3662 (GR Katoomba, 560651)	6 0	10 m	Veer left: From the intersection, this walk crosses over Den Fenella Creek using the bridge and comes to an intersection with the 'Undercliff Walk'.
4.52	Int of Den Fenella and Undercliff Tracks -33.7259,150.3663 (GR Katoomba, 560651)	64 -1	380 m 9 mins	Turn left: From the intersection, this walk follows the 'Wentworth Falls Picnic Area' upstream, keeping Den Fenella Creek on the left.
4.90	Jamison Lookout -33.7255,150.369 (GR Katoomba, 562652)	6 0	90 m 2 mins	Turn around: From Jamison Lookout, this walk heads through the large car park to the far side of the lower parking area, coming to the signposted 'Short Cut Track' trackhead.